



Web Site: www.lswoodguild.com

Email: lswoodguild@comcast.net

October 2009

Volume 17, Issue 10

Lee's Summit Woodworkers' Guild, Inc.

President's Corner By Greg Hull



It's
the

Return to Lee's Summit by
5:00 PM.

There are only a few restaurants in town and we have made arrangements with one that can accommodate us. They have a buffet available for \$14 including drink, tax, and tip. The shop and restaurant can accommodate about 35 people.

Mel checked on renting a couple of 15 passenger vans and has figured that the cost for transportation will be about \$15 per person.

The signup sheet and additional information will be at the October meeting.

Due to the size of the shops and limitation of 15 passengers per van, we need to limit this trip to the first 30 members to sign up. We will also be collecting at this meeting so we can get the vans locked on.

I'm sorry to say that we won't be having a fall shop tour. Time got away from me and with the other activities and the holidays coming up, I think it will be better to just plan on a

bigger and better spring shop tour.

We have officer elections coming up at the November meeting and are planning on December being a holiday party as we've done the last couple of years.

I think last month's breakout sessions went well, I know several members have spoken with me since the meeting and relayed that they really enjoyed the format. ☺

Greg Hull
President

NEXT MEETING

Tues, October 13, 2009 7:00pm
Lee's Summit Christian Church
800 N.E. Tudor Road
Lee's Summit, MO 64086

President

Greg Hull (816) 246-4738
ghull2000@yahoo.com

Vice Pres.

Mel Bryan (816) 524-7767
mrsebryan@planetkc.com

Treasurer

Linus Goth (816) 966-8114

Secretary

Bill Akers (816) 524-4237
wakers4@kc.rr.com

Board Members

Charles Honeywell
(816) 478-8332
choneywell1@att.net

Buddy Epperson
imbudep0242@sbcglobal.net

Eddie Mynatt
(816) 373-4274
mynatts@comcast.net

Circulation & Membership

Chairman
Roy Hackemeyer (816) 524-9416
roy@hackemeyer.com

Editor

Kevin Newman (816) 537-5834
mknsawdust@comcast.net

busy season again.

Its fall and the holidays are just around the corner.

There was a sawmill demo earlier this month on the 3rd held by our members. Larry McFerrin, Curt Tyhurst and Bob Pressly set up a sawmill demo for our members.

Charlie Honeywell and Mel Bryan went up to Jamesport to coordinate our upcoming field trip. Working with one of the shop owners they were able to lock on Saturday, 21 November. Here is the tentative schedule:

Depart Lee's Summit at 7:00AM and arrive in Jamesport a little before 9:00AM.

Shop tour in the morning from 9:00AM to 10:45AM.

Lunch in Jamesport at 11:00AM until about 12:15PM.

Another shop tour following lunch. Depart Jamesport at 3:00 PM

In This Issue:

- Presidents Corner
- Member Profile- Bob Pressly
- Jamesport Road Trip
- November Raffle News

October Program— Mark Sharky



Mark Sharky will be discussing new tools coming out in the near future and what new features are going to be

available.

Mark is a represent for Milwaukee, Ridgid, and Ryobi power tools.

He will entertain us with the latest in tool technology from those manufactures and will field your questions



pertaining to any of those brands. ☺



Jamesport Road Trip

Join the Lees Summit Woodworkers guild and take a trip with your fellow woodworker's to Jamesport., MO on Saturday, November 21st.

Jamesport is an Amish community where we will be visiting a couple of Amish woodworking shops. You won't find power tools operated by electric motors in any of these shops. How do they power their woodworking tools? Come along and find out. In addition to visiting a couple shops, we will also be having lunch at an Amish diner in Jamesport. The diner is very small and will only accommodate about 35 people, so we have been told to arrive early. As Greg mentioned in his article, the buffet is going to cost about \$14 per person. This includes an \$8.95 buffet,

drink, tax, and tip. You may also order from a menu if you choose, or you are welcome to bring your own sack lunch.

Arrangements have been made for renting a couple of passenger vans. Space is limited, so if you would like to join this trip and ride with the group, you will need to sign up at the next guild meeting and pay \$15 to cover the cost of transportation. Lunch is not included in the cost.

You may also make your own transportation arrangements and meet the group in

Jamesport, but we still need you to fill out the sign up sheet and indicate you will be driving yourself. Due to limited restaurant, parking, and shop space in Jamesport, we need to keep the group size to about 30 to 35 people max. If our capacity is reached fairly quick, your name will be on a standby list in case someone cancels at the last minute, so go ahead and sign up anyway. To recap Greg's itinerary, we will depart the Lee's Summit Christian church promptly at 7:00 a.m. and arrive at the a woodworkers shop at

approximately 9:00 a.m. for a shop tour. We expect to be at this shop for about 1 hour and 45 minutes.

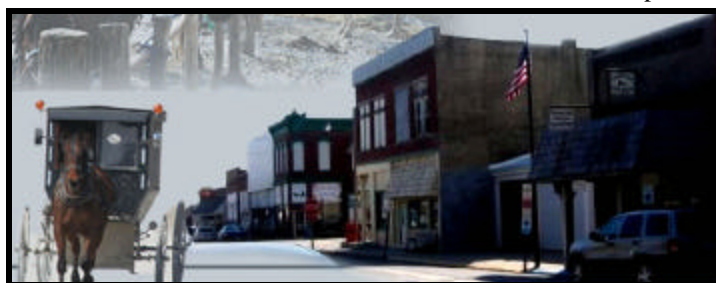
After the first shop tour, we will break for lunch from 11:00 a.m. to 12:15pm, then head to a second shop for another tour.

We expect to depart Jamesport at around 3pm and arrive back in Lee's Summit by 5pm.

This should be an interesting trip so sign up early and don't miss out. More information will be available at the guild meeting.

For more information on Jameport, visit their website at the following link.

<http://www.jamesport-mo.com/> ☺



Out of the Workshop-Guild Member Profile Of Bob Pressly

You've heard it said of someone; "He's not afraid to tackle anything". Well, that statement is certainly true of this month's member, Bob Pressly. The reason that can be said with clear assertion is the fact that during Bob's high school years at Belton High School, he was a defensive tackle on their football team and received the credit of "Honorable Mention All American". Bob then went on to college at the University of Missouri at Rolla on a football scholarship. While there, the team accomplished an undefeated season. While Bob is proud of those facts, and rightly so, he is quick to add that football was just his vehicle (and a fun one at that) to get the education he wanted. Bob was determined to "learn" and received the award "Second Team Academic All American", of which he is possibly even more proud.

Bob was born and raised on a small farm on the edge of Belton, another fact that Bob is thankful for. Although his father was not a full time farmer, there were enough farm chores to give Bob "the best of both worlds"; the training of hard work as well as easy access to the benefits of city life. Bob grew up in the same house that his father had. His father was a Metallurgical Engineer who worked and retired from Bendix. Bob followed closely in his father's foot steps by earning his BS in Mechanical Engineering and began working for Bendix (now Honeywell) where he still works 25 years later. There, Bob is a Principle Engineer/Engineering Project



Guild Member, Bob Pressly

Leader on a major project.

One year after college, Bob married his high school sweetheart, Janet, whom he'd known since they were about 8 years old, and moved to Lee's Summit. They have 3 children; 1 boy, Kyle who is going to NW Missouri State, and 2 girls, Kate and Kara, both in high school and very active in the sport of softball.

Bob had an introduction to woodworking in Jr. High in woodshop class and drafting, but in high school he took metal shop and did his woodworking at home. His father always had some remodeling project going on the family dwelling, so woodworking was close at hand. Learning to 'tackle anything', Bob was interested in "taking things apart", often

guild "for a long time", possibly close to the beginning of the guild. He was drawn to the guild by other members that he worked with at Bendix, namely; John Freeland, Jim Thomas and Rex Brown. What he enjoys most about the guild are the members and the encouragement to become a better woodworker. He feels he learns something each time and enjoys the sharing that takes place.

Bob has no particular specialty in his woodworking and will attempt whatever needs to be done for the project. Some of his projects include; case work, cabinets, vanities, benches, tables, bunk beds, picture frames, flag boxes or whatever is needed, even building his own separate shop building. He has tried some woodturning and would like to do more in the future. His favorite tools are power tools. He prefers to 'get it done' rather than spend the time with the hand tool process. Most of Bob's projects have been made using red oak, but he now likes cherry, walnut and white oak. Walnut is a particular favorite, especially a stash of walnut that his dad got when he was back in high school and therefore reserved for those very special projects. Using that walnut for a couple of particular projects has been his favorite. Special memories related to woodworking are the times when he had to borrow most all of the tools he needed from friends and family. Now, he likes to share what he can. In that line, Bob loves to teach, sharing with the youth in particular. For finishing off a project, Bob prefers to wipe on

to his father's concern. Bob's first project after college was a couple of end tables which are still in use in their home. Since then his woodworking skills have been pretty well self instructed with the help of friends and guild influence. Bob likes to design projects himself and usually does not use plans. The rocking horses, of which he shared pictures at one of last year's guild meetings, are an exception which may be one of his most challenging projects. They involved a lot of angled joinery which took longer than he had planned. Bob considers his dad to be his 'life' mentor who gave him the 'do-it-yourself' spirit and ability and he credits his 7th grade chemistry teacher as a positive encourager to 'do anything you want to'.

Bob has been a member of our

(Continued on page 6)

Metro Hardwoods October Specials.



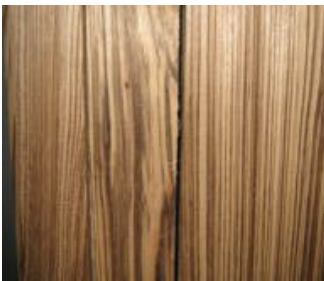
Goncalo Alves (Tigerwood)

\$6.69 per board foot
Surfaced two sides and one edge straight line ripped to 25/32" thick.

Poplar

\$1.80 per board foot

Surfaced two sides and one edge straight line ripped to 25/32" thick.



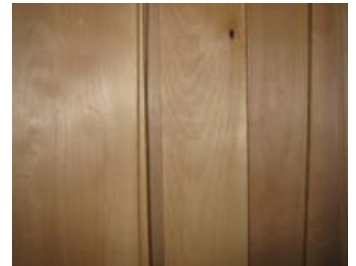
Zebrawood

\$16.19 per board foot
Surfaced two sides and one edge straight line ripped to 25/32" thick.

Birch Shorts

\$2.54 per board foot

Surfaced two sides and one edge straight line ripped to 25/32" thick.



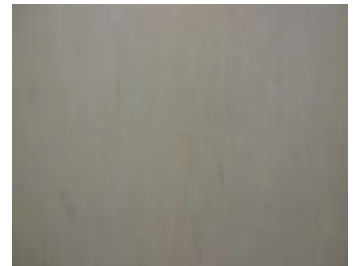
Red Oak

\$2.21 per board foot
Surfaced two sides and one edge straight line ripped to 25/32" thick.

4' X 8'-3/4"

Poplar Plywood G2S VC

\$39.99 per sheet



Dues for 2010

The dues structure for 2010 is changing.

As previously mentioned, the membership is \$15 if you wish to receive the monthly newsletter via email. If you choose to have the newsletter mailed to you via U.S. Postal Service, your dues will now be \$25 per year.

Roy Hackemeyer will begin collecting dues for 2010 at the next guild

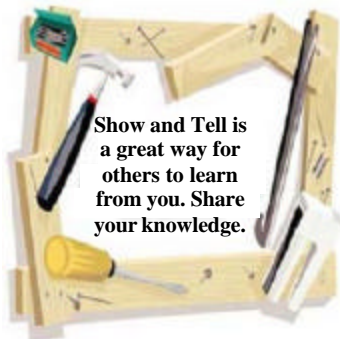
meeting. You will also be receiving an envelope with an insert to select your membership type. If you choose the email membership, you will need to provide a current email address where you would like to receive the newsletter.

You can enclose a check and mail it to Roy, or you can bring it with you to the next guild meeting. ☺

Shop Tour Update

The Fall Shop tour has been postponed to a Spring Shop tour.

There are a number of other activities being planned in the coming weeks so be sure and get involved with some of those. ☺



Show and Tell is a great way for others to learn from you. Share your knowledge.

Secretaries Notes For August 11, 2009



Secretaries Notes

President Greg Hull called the meeting to order at 7:00 p.m. General statements made by the President were:

GUILD DUES – New members dues are \$7.50 for the remainder of 2009.

TOY PROJECT -Supporting our raffle gives you a chance to add to your collection of needed supplies and tools and also a way of giving back to the community through your charitable donation. Thanks to those that are supporting this project.

SHOP TOURS – Clean up for the fall season – Looks like we have two shops lined up for the later part of October – more later as you can still get your name on the FALL SHOP TOUR list. We always learn something at these shops no matter their size.

BUS TRIP – BUS TRIP or CAR TRIP– Charlie Honeywell is working on a possible trip to JAMESPORT later in November – lots of logistics need to be put in place before this can be finalized. We had 33 members show interest.

GUILD LOGO SHIRTS & HATS- Order your preferences now. Check with Mel Bryan.

LIBRARY – Looks like we have this under control – so make use of the books, videos and tools that we have for loan (see Geo Ross).

ELECTION OF OFFICERS – Please volunteer for a position this month.

MEETING NOTICES – During bad weather tune to CHANNEL 41 for any cancellation of the GUILD meeting.

GUEST/VISITORS - Welcome and please sign the registry (this gets you a copy of the newsletter for the next two months). Attendance was 71 .

SHOW AND TELL—

1. Daniel Blackman had a FLAG/MEDALS CASE made from OAK with a POLY FINISH.
2. Connie Mowrey had a FOOT STOOL made from BURL WALNUT with a SHELLACK and POLY FINISH.
3. Greg Hull had a PICTURE FRAME made from PINE with a WATER BASE DYE

and POLY FINISH.

4. Burt Brown had TURNED BOWLS of PURPLE HEART and VARIOUS WOOD TYPES.
5. Roy Wall had a TISSUE BOX made from WINGATE and ZEBRA WOOD.
6. George Mann had a FLY TIE CASE made from ARAMATIC CEDAR (for bug protection).
7. JIM McCord had another batch of his JEWELRY BOXES (Frank Llyod Wright) made from VARIOUS WOOD TYPES.
8. Mel Bryan showed how BENCH CAKES can be USED AS ROUTER PADS.

Thanks to those that participated and hope we did not overlook some members project. Also, remember that you are entered in a drawing if you participate in Show an Tell.

PROGRAM—Vice President Mel introduced the program for tonight which will feature several of our members being team leaders for another of our BREAKOUT SESSIONS. This gives each of our members a chance to be an active part of the program by asking questions and inputting their knowledge of a particular subject. We had discussion groups on subjects such as ROUTER JOINERY, PHOTOGRAPHY; FINISHING, JOINERY and GOOGLE SKETCHUP.

Thanks to Kevin Newman, Roy Wall, Gerard Wissman, Greg Hull and Mel Bryan for stepping forward. Don't forget to help Vice President Mel Bryan by keeping a lookout for anything that would be of interest to our members.

COOKIES: Thanks to the guild for providing the cookies.

NEXT MEETING—October 13, 2009.

President Greg Hull closed the meeting at 9:00 p.m.

Respectfully Submitted,
Bill Akers ☺

Skates
10% on products and 20% on books. (816) 421-4158

Merit Industries - 15 to 25% on all items.

Woodline Arizona or www.woodline.com—10% off. (800) 472-6950

Klingspor—10% off non-powered items. (800) 645-5555

Woodcraft Supply

10% off-Excludes all power tools. Must show membership card.

Woodsmith Store

10% off, Excludes all power tools. Buyer must show guild membership card. (800) 835-5084

Valuemax Tools

10% off Catalog Prices www.bluerouterbits.com or Call (800) 782-8083

Hartville Tool

20% off 1st year.
15% off subsequent years

Metro Hardwoods

10% Off. Must show card. (816) 373-1710

LEE'S SUMMIT
WOODWORKERS' GUILD,
INC.

1611 NE Oak Tree Dr.
Lee's Summit, MO 64086

Mission Statement

The Lee's Summit Woodworkers' Guild will strive to promote the exchange of woodworking information and further the craft.

WE'RE ON THE WEB

Web Site: www.lswoodguild.com

Guild Member Profile Continued...

(Continued from page 3)
satin poly for household items and oil finishes for others.

Advice Bob would offer to beginning woodworkers is; "You can do it" as echoed from his 7th grade chemistry teacher, and "a job worth doing is worth doing right", "start out small and work up; keep improving". With additional reflection, Bob stresses safety; "if you're doing something and you feel uneasy, stop; listen to that little voice".

Additional interests and hobbies include; bird hunting and shotgun shooting sports like skeet and trap, automobile restoration, logging and helping with the sawmill. In

the past Bob was very involved in the Boy Scouts as a leader in local Troop 323. He smiles proudly when he mentions his son achieving Eagle Scout.

Thanks, Bob, for letting us get to see into your life a little and get to know you better. Keep tackling the woodworking along with all the mechanical engineering things you do. ☺

Mel Bryan

New Members

Congratulations and welcome to these first time new members of the Lee's Summit Woodworker's guild. We're glad to have you aboard. ☺

Welcome Aboard!

Bob Williams
Blue Springs, MO

Raffle—DeWalt Cordless Saw

The October raffle will feature a DeWalt 14.4volt 5 3/8" cordless trim saw kit(Model DW935K). This kit includes battery, charger, saw, saw blade, and a handy carrying case.

Features:

- 5-3/8" blade cuts 2X materials (ex. 2x4) on a 90°



plane in a single pass

- Left side blade provides maximum visibility of cut line
- 50° bevel for added capacity
- DEWALT built high-performance motor with fan cooling delivers maximum power and durability
- Spindle lock for easy blade changes.

Raffle tickets can be purchased at the meeting for \$2.00 each or 3 for \$5.00.

All proceeds will be used to benefit our charity fund and the Toys for Tots program. ☺

November Raffle

A special thanks to Steve Ballew and Ballew tool. Steve has come through again and made another significant donation of a Delta surface planer to the guild raffle.

The raffling of the planer will be handled the same as it has in past years.

All raffle tickets from the October guild meeting will be held over for to the November guild meeting to increase your chances of winning the planer. When you purchase a raffle ticket at the October meeting you will be asked to write your name and phone number on each ticket. If you are not able to be present at the November

guild meeting, and your name is the first one drawn, we will assume you want the planer and you will be contacted after the meeting.

Be sure and give Ballew Tool a call and give them a chance to earn your business. ☺

